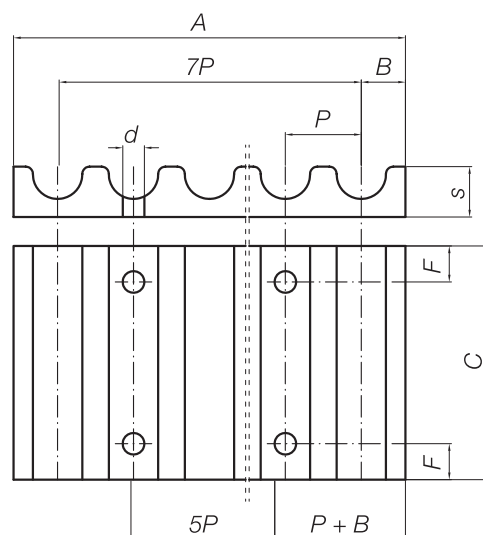
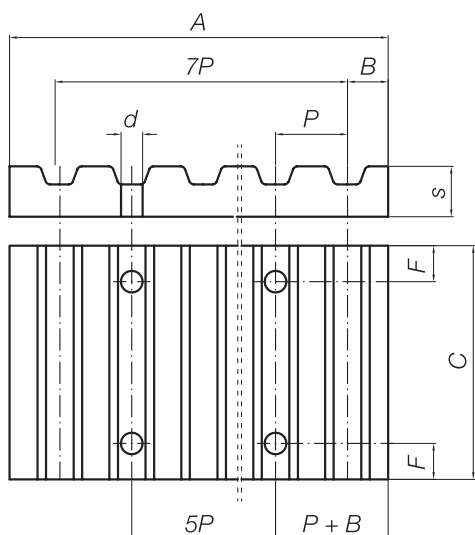


PIASTRE DENTATE CLAMPING PLATES



XL - L - H - T5 - T10 - T20 - AT5 - AT10 - AT20

HTD

Esempio codice di ordinazione / **Order code example**
PAT10-25: Piastra dentata passo AT10 per cinghia larga 25 mm
AT10 pitch clamping plate for 25 mm width belt

Piastrre dentate per cinghie con passo in pollici / **Clamping plates for imperial pitch belts**

Alluminio Alum.	Passo Pitch	F	d	B	A	S	Larghezze cinghia [1/100"] / Belt width [1/100"]									
							025	037	050	075	100	150	200	300	400	
							C									
*	XL	6	5,5	3,5	42,5	8	25,5	28,5	32	38	45					
*	L	8	9	5	76,6	15		36	39	45	51,5	64	77			
*	H	10	11	9	106,9	22			45	51	57,5	70	83	108	134	

Piastrre dentate per cinghie HTD / **Clamping plates for HTD pitch belts**

Alluminio Alum.	Passo Pitch	F	d	B	A	S	Larghezze cinghia [mm] / Belt width [mm]												
							6	9	10	15	20	25	30	40	50	55	85	115	170
							C												
*	5M	6	5,5	3,25	41,5	8	25	28		34		44							
*	8M	8	9	5	66	15			35	40	45		55		75		110		
*	14M	10	11	9	116	22						56		71		86	116	146	201

Piastrre dentate per cinghie con passo metrico / **Clamping plates for metric pitch belts**

Alluminio/Alum.	Passo Pitch	F	d	B	A	S	Larghezze cinghia [mm] / Belt width [mm]									
							9	10	16	20	25	32	50	75	100	
							C									
*	T5	6	5,5	3,25	41,65	8	25	29	35	39	44	51	69			
*	AT5	6	5,5	3,25	41,65	8	25	29	35	39	44	51	69			
*	T10	8	9	5	80	15		35	41		50	57	75	100	125	
*	AT10	8	9	5	80	15		35	41		50	57	75	100	125	
*	T20	10	11	10	160	20					56	63	81	106	132	
*	AT20	10	11	10	160	20					56	63	81	106	132	